



Pigments

Pigments for  
Decorative Coatings

**SUDARSHAN**

First Choice For New Formulations

# Why Us?



## About Us

Sudarshan is a leading global producer of performance colorants, manufacturing an extensive range of Organic, Inorganic and Pearlescent pigments as well as Dispersions.

Sudarshan's quality pigments and dispersions add outstanding performance, long term protection, brilliant color and special effect to the Coatings, Plastics, Printing Ink, Cosmetics, Paper and Textile industries.

Sudarshan has over 60 years of manufacturing experience, with sales in more than 85 countries and sales presence in North America, Europe, China and Latin America.

## Technical Capability, Infrastructure and Commitment to Quality

Our commitment to being a world class solution provider is maintained by our technical capabilities and an infrastructure that supports the wide customer base that we cater to.

This capability is a combination of a comprehensive gate-review process in product development; state-of-the-art analytical testing facilities that enable a wide range of investigative methods and a data driven approach; and an application lab that accurately recreates the behavior of our product in our customer's application to provide the optimal solution.

Each year, we invest substantially in R&D and Applications Service to support our customers technically and to extend our range of products to meet our customers' requirements.

Our quality, environment and safety systems are based on and accredited with international standards. Our improvement programs are being driven through 6-sigma methodology.



ISO 9001

ISO 17025

ISO 14001

# Pigments

## For Decorative Coatings

	Product Name & Code	C. I. Name	Air Drying Alkyd Paint	Water Base Decorative Paint	Opacity	Light fastness Full Tone/Tint	Weather fastness Full Tone / Tint	Fastness to Alkali	Specific Gravity	Oil Absorption
	Sudacolor™ Yellow 10G	PY 3	●	●	Semi-transparent	7/5	-	5	1.30	27
	Sudaperm™ Yellow 2903	PY 151	●	-	Opaque	8/7	5/4	3	1.50	50
	Sudaperm™ Yellow 2906	PY 154	●	●	Opaque	8/7	5/4	4-5	1.40	37
	Sudafast™ Yellow 127	PY 74	●	●	Opaque	7/5	4/2	5	1.37	35
	Sudafast™ Yellow 117	PY 74	●	●	Transparent	7/5	4/2	4	1.39	40
	Sudafast™ Yellow 128C	PY 74	●	●	Transparent	6/5	4/2	5	1.40	36
	Sudacolor™ Yellow 118	PY 65	●	●	Transparent	6/5	4/2	5	1.49	40
	Sudafast™ Yellow 134	PY 83	●	●	Opaque	7/6	4/3	5	1.40	70
	Sudafast™ Yellow 135	PY 83	●	●	Opaque	7/5	-	3	2.04	73
	Sudafast™ Yellow 137C	PY 83	●	●	Transparent	7/5	-	5	1.30	80
	Sudaperm™ Yellow 2925C	PY 110	●	●	Semi-transparent	8/7	5/4	5	1.40	30
	Sudaperm™ Orange 2915C	PO 36	●	●	Opaque	8/7	5/4	5	1.59	44
	Sudacolor™ Red 401	PR 4	●	●	Opaque	6/3	-	4-5	1.60	41
	Sudacolor™ Red 417	PR 3	●	●	Opaque	6/4	-	5	1.45	41
	Sudacolor™ Red 415	PR 3	●	●	Opaque	6/4	-	5	1.55	40
	Sudafast™ Red 341	PR 112	●	●	Opaque	7-8/6	4-5/2-3	4-5	1.46	40
	Sudafast™ Red 336	PR 112	●	●	Semi-transparent	7-6	4-3	5	1.40	41
	Sudafast™ Red 331	PR 112	●	●	Transparent	7-5/6	-	5	1.40	44
	Sudaperm™ Red 2963C	PR 170	●	●	Semi-transparent	7/5	4-2	5	1.30	40
	Sudaperm™ Red 2964C	PR 170	●	●	Semi-transparent	7/5	4-2	5	1.48	43
	Sudaperm™ Red 2967C	PR 170	●	●	Semi-transparent	7/5	4-2	5	1.20	36
	Sudaperm™ Red 2987	PV 19	●	●	Semi-transparent	8/7	5/4	5	1.40	67
	Sudaperm™ Pink 2998	PR 122	●	●	Transparent	8/7	5/4	5	1.34	50
	Sudaperm™ Pink 2999	PR 122	●	●	Transparent	8/7	5/4	5	1.32	55
	Sudaperm™ Pink 2997C	PR 122	●	●	Transparent	8/7	5/4	3	1.55	55
	Sudaperm™ Red Violet 2995	PV 19	●	●	Transparent	8/7	5/4	5	1.43	56
	Sudafast™ Blue 2662	PB 15:1	●	●	Transparent	8/8	5/5	5	1.50	34
	Sudafast™ Blue 2784	PB 15:3	●	●	Transparent	8/8	5/5	5	1.70	40
	Sudafast™ Blue 2785	PB 15:3	●	●	Transparent	8/8	5/5	5	1.50	43
	Sudafast™ Blue 2796	PB 15:4	●	●	Transparent	8/8	5/5	4-5	1.30	46
	Sudafast™ Green 2727C	PG 7	●	●	Transparent	8/8	5/5	5	2.60	34

● Suitable for application      ○ Potential Use

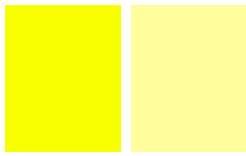
Note : The values displayed in the oil absorption column are in tolerance of ±10%

Light fastness is assessed on 1-8 Blue Wool Scale where 1= Poor & 8 = Excellent

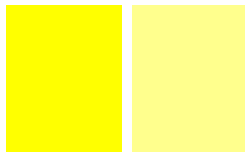
Weather fastness is assessed on 1-5 Grey Scale where 1= Poor & 5= Excellent

# Pigments

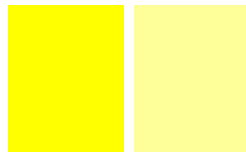
## For Decorative Coatings



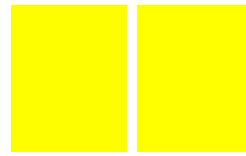
Sudacolor™  
Yellow 10G PY3



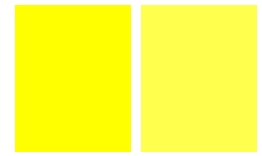
Sudaperm™  
Yellow 2903 PY151



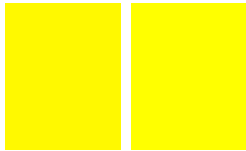
Sudaperm™  
Yellow 2906 PY154



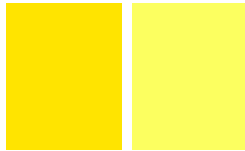
Sudafast™  
Yellow 127 PY74



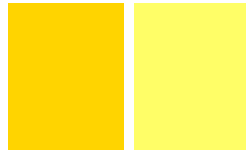
Sudafast™  
Yellow 117 PY74



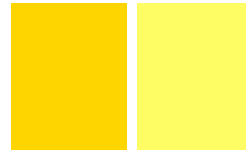
Sudafast™  
Yellow 128C PY74



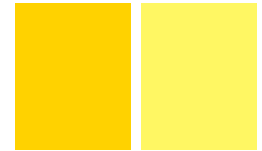
Sudacolor™  
Yellow 118 PY65



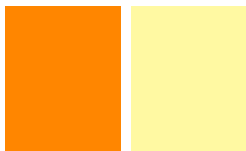
Sudafast™  
Yellow 134 PY83



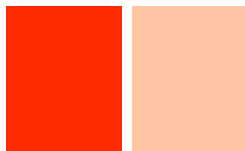
Sudafast™  
Yellow 135 PY83



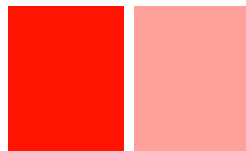
Sudafast™  
Yellow 137C PY83



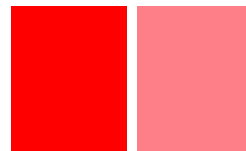
Sudaperm™  
Yellow 2925C PY110



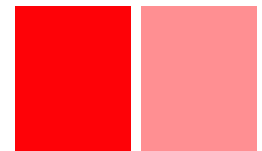
Sudaperm™  
Orange 2915C P036



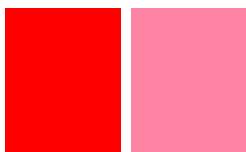
Sudacolor™  
Red 401 PR4



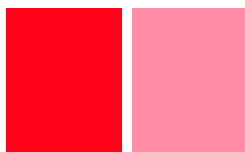
Sudacolor™  
Red 417 PR3



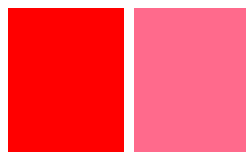
Sudacolor™  
Red 415 PR3



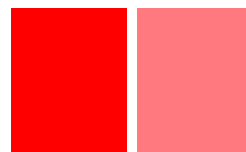
Sudafast™  
Red 341 PR112



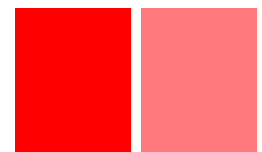
Sudafast™  
Red 336 PR112



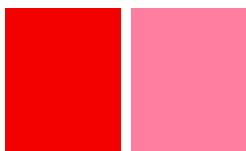
Sudafast™  
Red 331 PR112



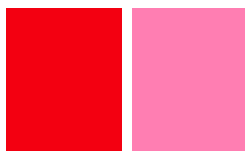
Sudaperm™  
Red 2963C PR170



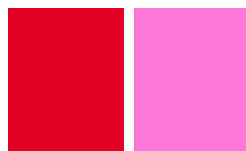
Sudaperm™  
Red 2964C PR170



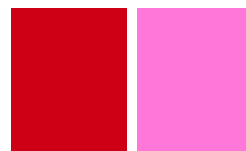
Sudaperm™  
Red 2967C PR170



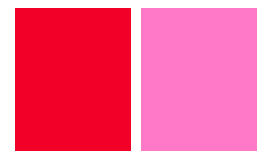
Sudaperm™  
Red 2987 PV19



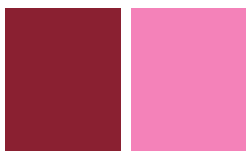
Sudaperm™  
Pink 2998 PR122



Sudaperm™  
Pink 2999 PR122



Sudaperm™  
Pink 2997C PR122



Sudaperm™  
Red Violet 2995 PV19



Sudafast™  
Blue 2662 PB15:1



Sudafast™  
Blue 2784 PB15:3



Sudafast™  
Blue 2785 PB15:3



Sudafast™  
Blue 2796 PB15:4



Sudafast™  
Green 2727C PG7

Color Reproduction: For technical reasons connected with color reproduction, the colors shown may not exactly match the pigment colors and do not represent a particular finish.

Tint shades are reproduced with a ratio of Pigment: TiO<sub>2</sub> = 1:10.

Light fastness is assessed on 1-8 Blue Wool Scale where 1= Poor & 8 = Excellent

Weather fastness is assessed on 1-5 Gray Scale where 1= Poor & 5= Excellent

# Pigments

## For Decorative Coatings



### Pigments

Our **Sudaperm™**, **Sudafast™** and **Sudacolor™** pigments have been carefully selected to provide a palette with a wide spectrum of colors and effects for decorative paints and coatings.

They are ideal for use in universal stainers for in-plant and in-store tinting systems, solvent and water based tinters and dispersions or finished paints.

Sudarshan pigments are generally equivalent to or superior than other leading products and they offer exceptional value-in-use.

### Technical Properties

- Bright and intense colors
- High tinctorial strength
- Good range of opaque and transparent pigments
- Good rheology that allows for high pigment loadings in mill bases
- Wide compatibility across solvent and water based paints
- Excellent solvent and bleed fastness
- Readily dispersible
- Exceptional light fastness

### Color Combinations

The transparent colors in the range are easily combined with pearlescent pigments, in our Sumica™ range, or metallics, to produce excellent special effects which are stable to typical stir-in processes. They are suitable for interior and exterior applications, with special weather-resistant grades.

**Disclaimer:** The information included here is based on the most reliable data generated by our laboratories. Since the performance of a pigment also depends on the additives and polymers used, we recommend that customers should test the suitability of the pigment for their end application. However, if we are provided with testing methods and samples, we would be glad to do the same.

We will do our best to provide products of consistent quality, within the scope of the general conditions of sale and delivery. Should, in spite of these precautions, any liability be established, the damage, if any will be limited to the value of the goods delivered by us and used by you.

All data is based on internal testing and does not guarantee specific properties or performance. Samples are available for customer testing on request. The quality of our products is guaranteed under our general conditions of sale.

# Pigments

## Contact Us

### Sudarshan Chemical Industries Limited

Global Head Office:  
162 Wellesley Road  
Pune - 411 001, India  
Tel: +91 20 260 58 888  
Fax: +91 20 260 58 222  
Email: [contact@sudarshan.com](mailto:contact@sudarshan.com)

### Sudarshan Europe B.V.

Kingsfordweg 151  
1043 GR Amsterdam  
Tel: +31 (0)20 403 7504  
Fax: +31 (0)20 403 7502  
Email: [eu@sudarshan.com](mailto:eu@sudarshan.com)

### Sudarshan North America Inc.

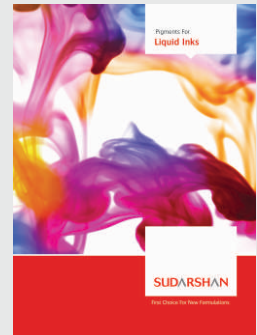
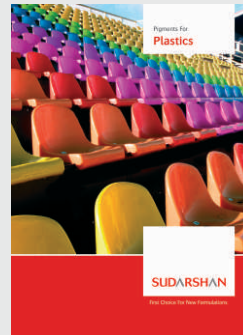
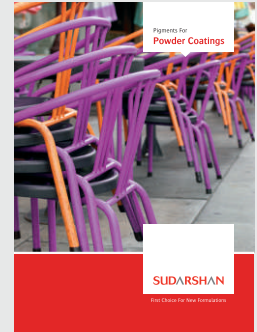
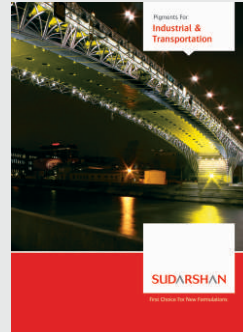
76 N. Walnut Street  
Ridgewood, NJ  
USA 07450  
Tel: +1 201 652 2046  
Email: [usa@sudarshan.com](mailto:usa@sudarshan.com)

### Sudarshan (Shanghai) Trading Company Limited

Room 1911, 19/F New Hualian Mansion,  
East Wing, No. 755 Middle Huaihai Road,  
Huangpu District, Shanghai, China, 200020  
Tel: +86 21 2215 7500, +86 21 2215 7559  
Fax: +86 21 2215 7463  
Email: [china@sudarshan.com](mailto:china@sudarshan.com)

### Sudarshan Mexico S. de R.L. de CV.

Av. Chalma s/n Oficina b-13  
Jardines de la Hacienda Sur, 54720  
Cuautitlan Izcalli, Edo. de Mexico, Mexico  
Tel: +52 55 2472 0246  
Email: [mexico@sudarshan.com](mailto:mexico@sudarshan.com)



Ecological and Toxicological  
Association of Dyes and  
Organic Pigments Manufacturers

[www.sudarshan.com](http://www.sudarshan.com)